



you can hear the difference  
High performance speakers from Swans



T200B  
Hi-end Multimedia System

HiVi Inc. (USA)  
Swans speaker systems, Inc.  
11630 Goldring Road, Arcadia, CA 91006  
Tel: +1-626-930-0606 Fax: +1-626-930-0609

HiVi Inc. (China)  
Guangzhou Hi-Vi Electrical Appliances Co., Ltd  
No.13, Sansha Industrial Zone, Dongchong Town,  
Panyu District, Guangzhou, China  
Tel: +86-20-3490 1885 Fax: +86-20-3490 1863

[www.hivi.com](http://www.hivi.com)

## HiVi H10 Sub Active Subwoofer Speaker

### 1. Unpacking

The speaker adopts fine packing material to protect it from damage during shipping. In the box, you should find:

- Power cable
- Audio signal cables
- Remote Control
- Product manual

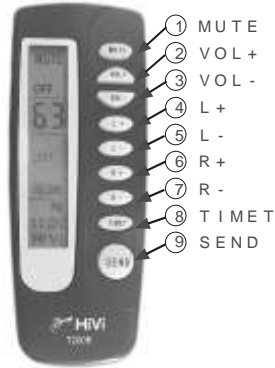
### 2. Speaker placement

Please place the speakers on the computer desk.

If your computer desk is small, the speakers can also be placed on stands. The speakers should be placed on a surface approximately 60-100 cm from the ground. The distance between the speakers and the listener should be in the range of 50-100 cm. The listener should sit in the middle of the speakers with each speaker equidistant from the listener. For further information feel free to contact your local HiVi retailer.

### 3. Remote control instruction

- 1) ①MUTE: press this button to turn on the MUTE, press once more to turn off the MUTE.
- 2) ②,③VOL+/VOL-: While you press this key, you will see 0-63dB on the display. 0dB is the minimum and 63dB is the maximum.
- 3) ④,⑤L+/L-: press L+/L- to adjust the volume of the left channel.
- 4) ⑥,⑦R+/R-: press R+/R- to adjust the volume of the right channel.
- 5) ⑧TIME T: press it for three seconds, you will see the time setting on the display, and then press VOL+/VOL- to adjust the time, press any key to exit.
- 6) ⑨SEND: T200B has an independent amplifier in the right and left speaker. When you want to adjust the main volume of the speaker, please aim the remote control at the right speaker first and adjust the volume to your desired position, finally aim the remote control at the left speaker and press SEND button to make it's volume level identical to the right speaker.



### 4. Speaker connection

T200B has a built-in amplifier. In the back of the speaker, there is a power socket, power switch, AUDIO IN. Detailed as follow:

#### 1). Connect the speaker with the computer

Insert the RCA pins of the audio signal cable into the AUDIO IN sockets in the back of the speaker, the red socket stands for the right speaker, the white socket stands for the left speaker, and then insert the 3.5 mm mini stereo jack end of the signal cable into the output terminal of the computer sound card.

#### 2). Connect the speaker with other equipments

Insert the RCA pin of the coaxial cables or AV cable to the AUDIO IN socket in the back of the speaker, the red socket stands for the right speaker, the white socket stands for the left speaker. The other side of the cable connects with the equipments (e.g.: DVD, VCD, CD etc).

#### 3). Power connection

First, set the power to be off, insert the provided power cable to the power socket in the back of the speaker and then turn on the power.

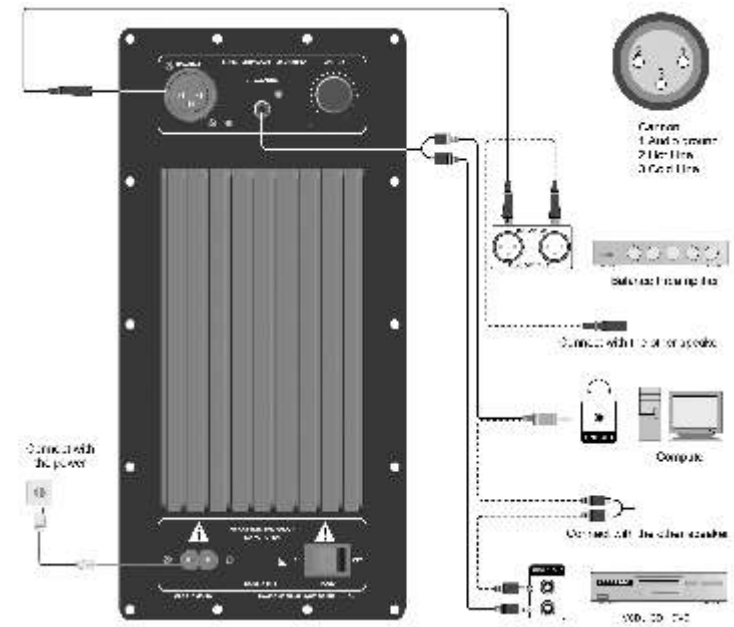
4). Please check above steps carefully and make sure the connection is correct.

### CAUTION

\* Please make sure the power is switched off when connecting the power cable.

\* As there is a built-in amplifier in the main speaker, be sure not to jam or block the port in the back of the speaker. If the port is obstructed the amplifier may overheat. Also be sure not to insert any objects in through the port as they could cause the amplifier to short circuit.

\* The quality of cables will directly influence the sound quality. We suggest using the provided signal cables. However you may also choose to purchase 2<sup>nd</sup> party audio cables.



### 5. Listening

- 1). Please turn down the volume to the minimum, and then turn on the power.
- 2). Switch on the computer and then turn the volume a little bit up. You will hear the operating systems startup sounds when the computer starts.
- 3). Put your favorite CD into the CR-ROM.
- 4). Adjust the volume control to a suitable position.

#### Notice:

\* As T200B is a Hi-end Multimedia system, we suggest using a high quality sound card so that it can produce the best possible high fidelity sounds. Using a poor quality sound card will degrade the sound quality.

\* Please do not have the volume turned up to the maximum while turning on the power. The amplifier or drivers could be damaged.

### 6. Break-in

Break-in refers to the aging period for the speakers to where they perform best acoustically. Upon purchase the speakers are not broken-in. A period ranging from 48-100 hours of usage is recommended before both the amplifier and speaker drivers behave optimally.

## HiVi H10 Sub Active Subwoofer Speaker

### 7. Listening environment

In order to get best sound, not only do we recommend using high quality components to match the speakers, but also a good listening environment. The placement and the size of the listening area will influence the sound quality.

1). A few simple suggestions to optimize your listening environment:

- a. Carpet the floor to avoid the sound reflection.
- b. Decorate the wall with cloth or other sound adsorbing materials to improve the sound quality.
- c. Use thick curtain to avoid the sound reflection made by glass windows.

2). The simplest means to test the placement is standing in the listening area and clap your hands, if you can hear the sound clearly and with minimal echo then your environment is suitable.

3). If you have any questions, please feel free to contact your local HiVi dealer.

### 8. Maintenance

T200B is a Hi-end Multimedia system that can be operated under normal conditions without requiring any maintenance. Avoid using any corrosive liquids or gases on the surface of the cabinet or on the speaker drivers. Do not place in high temperature, moist conditions, or sunshine for a long period of time. For cleaning be sure to use a detergent without any strong chemicals. We offer cloth grills for the speakers to avoid the dust and protect the drivers, especially the dome tweeter which will easily damage. In order to protect the speakers, we suggest leaving the cloth grills on.



Avoid magnetizing  
Disturbance



Do not place it under  
the sunshine for  
a long time



Do not place it in the high  
temperature or moist  
place for a long time



Do not touch the driver  
by your hands



Avoid corrosive  
liquid and gases

### 9. Trouble shooting

1). Problems with sound quality

a. Please check and make sure all drivers have sound or not? Is there any problem with the speaker?

b. Please check whether the audio signal cable is connected securely with the output terminal of the computer sound card?

2). No sound at all

a. Please check if the power cable is connected well? Is the power on or off?

b. Is the audio signal cable from your computer damaged or not connected with your computer sound card?

c. Please check your computer sound card driver.

3). Only one speaker has sound

a. Please check if the audio signal cable is connected well?

b. Please check if the audio signal cable is short circuit?

c. Please check the volume control and balance settings on your computer.

### 10. Warranty

If the problems still exist, please contact the local dealer to handle.